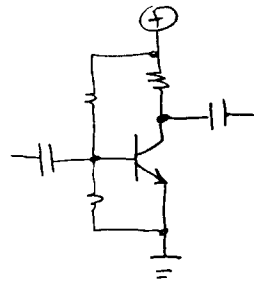


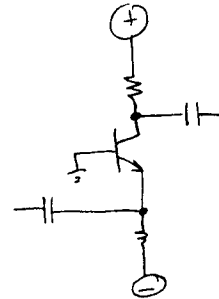
7B

6C  
7  
2

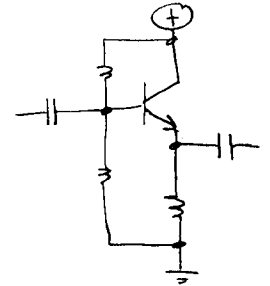
### 3 types of amplifiers



Common emitter  
High voltage gain  
moderate current gain



Common base  
High voltage gain  
current gain  $< 1$



Common collector  
High current gain  
Voltage gain  $< 1$

(Just a preview. We need to bias them first.)

Lab reports -

general comments -

All are OK.

Label the plots -

I could not tell what they mean

Mix text and figures -

(as opposed to Fig 1, Fig 2, etc)

Write the notes on the same page as the scope picture.

Procedure needs more detail -

Someone else should be able to repeat the experiment, with all the mistakes.