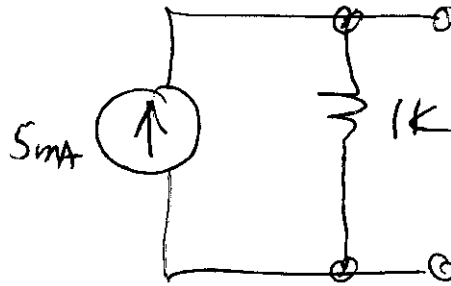
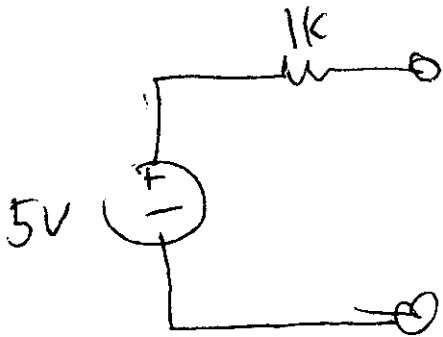


Name _____ Key

A generator puts out 5 volts into an open circuit,
and 5 mA into a short circuit.

Give two possible circuits to do this.

Each may have at most two components.



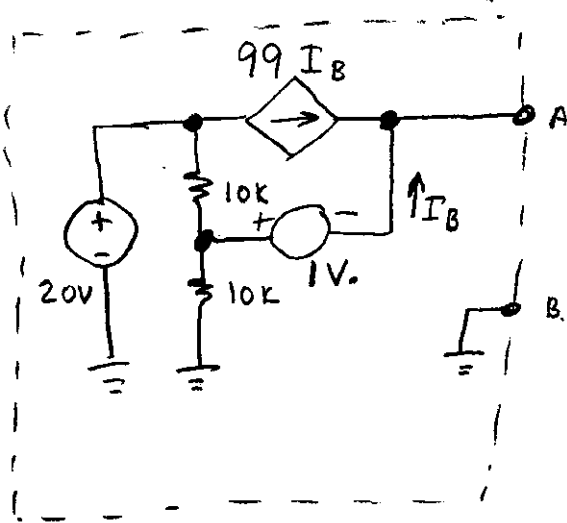
$$R = \frac{5V}{5mA} = 1k$$

-2 each schematic error.

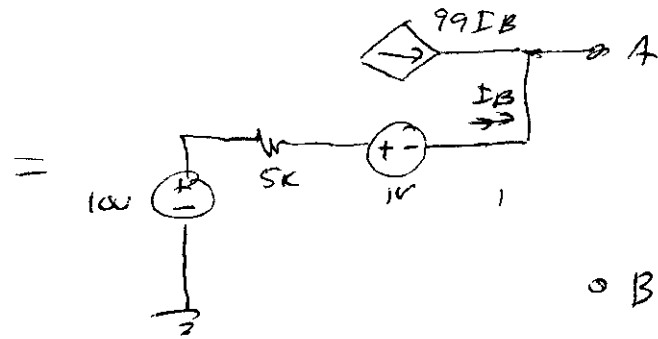
-1 each value error.

all but 3 got it.

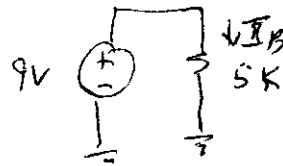
Here's a circuit:



Find Thevenin and Norton equivalent circuit

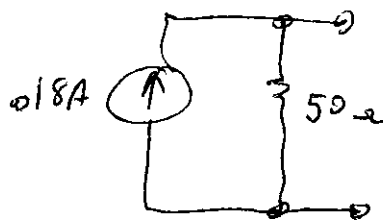
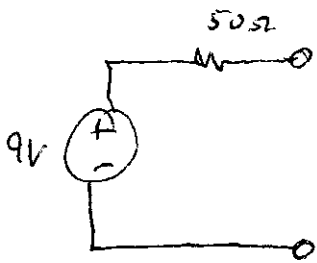


$V_A = 9V.$



$I_B = 1.8 \text{ mA}$
 $I_x = 100 I_B = 0.18 \text{ A}$

$R = \frac{9}{0.18} = 50$



Only one correct.

-4 bad nodal analysis

~~-2 didn't get Thev & Norton.~~

-6 blank

What is V_{out} ?

Homework

